



SAN DIEGO STATE  
UNIVERSITY

FINDING

YOUR

PIECE

IN

THE

LEADERSHIP

PUZZLE



**SDSU LEADERSHIP SUMMIT 2020**

CONRAD PREBYS AZTEC STUDENT UNION

FEBRUARY 15, 2020



# Welcome

On behalf of a team of dedicated professional and student staff, welcome to the 2020 SDSU Leadership Summit! This year's theme revolves around the concept of "finding your piece in the leadership puzzle." Like a puzzle, leadership is complex. There are many moving pieces that need to work together to make a bigger picture. Whether this is in regards to our own personal leadership development or in the organization(s) we work with, the puzzles are constantly evolving. Join us to discuss strategies to develop the pieces in your leadership puzzle.

To achieve this, we have a dynamic program planned for the day, which will include insight from university leaders, performance arts, skill-building workshops, networking opportunities with peers as well as alumni and business leaders, and words of wisdom from our keynote speaker. Today's keynote speaker is Cori Schumacher, Carlsbad City Council member and surfing champion. Our closing speaker is Christian Onwuka, the current SDSU Associated Students president. Both will share how their successes and failures fit into their constantly evolving leadership puzzles.

Enjoy what we hope will be a transformative experience.

Dr. Randy Timm

*Assistant Vice President for Student Affairs & Dean of Students*



SAN DIEGO STATE  
UNIVERSITY



Dr. Adela de la Torre  
*President, San Diego  
State University*



Christy Samarkos  
*Interim Vice  
President for  
Student Affairs,  
San Diego State  
University*

## Keynote Speaker

11TH ANNUAL LEADERSHIP SUMMIT



### CORI SCHUMACHER

Cori Schumacher is a Carlsbad City Council member, three-time Women's World Longboard Champion and author. She became a competitive surfer at the age of 8 and was the No. 1 US female shortboarder on the 1994 and 1996 US Team for the ISA Jr. Championships. After refocusing her competitive interests to longboarding, Schumacher won

three Women's World Longboard championships.

Schumacher became the first openly gay world surfing champion in 2010 and works hard for positive social change in and around persistent gender disparity, homophobia and the impacts of consumer culture in sports.

She co-founded two nonprofit organizations. The first, "The Inspire Initiative," is designed to enrich and empower women of all ages through participation in surfing while emphasizing education, media literacy and building a core community of leaders that will effect positive change in the world. She also co-founded the Institute for Women Surfers, "a grassroots educational initiative in the public humanities that brings together women surfers, activists, artists, business owners, scientists and educators to create spaces of peer teaching, learning and mutual aid."

In 2016, Schumacher was elected to the Carlsbad City Council, where she serves her district and on various regional government boards and committees.

## Closing Speaker

11TH ANNUAL LEADERSHIP SUMMIT



### CHRISTIAN ONWUKA

Christian Onwuka is a senior from southeast San Diego, studying business administration with an emphasis in finance, accompanied by a minor in honors interdisciplinary studies. He is honored to serve as the SDSU Associated Students president, as helping others is at the core of who Christian is. He understands the positive impact leaders

can have on the lives of those they represent and he is committed to service. Christian has a range of service and involvement experiences while at SDSU. After graduation, Christian plans to continue making an impact through leadership and service.

## Conference Schedule

11TH ANNUAL LEADERSHIP SUMMIT

8:30 - 9:00 AM	<b>Registration</b>
9:00 - 9:20 AM	<b>Welcome to the 11th annual SDSU Leadership Summit</b> (Montezuma Hall)
9:30 - 10:20 AM	<b>Session 1</b> (Breakout rooms)
10:30 - 11:20 AM	<b>Session 2</b> (Breakout rooms)
11:20 - 12:00 PM	<b>Lunch</b> (Pick up in the courtyard) »Engineering/STEM students: lunch in Templo Mayor (2nd floor) with Northrop Grumman executives »All students: lunch in Park Boulevard (1st floor) with SDSU Dean of Students Dr. Randy Timm
12:00 - 12:50 PM	<b>Session 3</b> (Breakout rooms)
1:00 - 1:50 PM	<b>Session 4</b> (Breakout rooms)
2:00 PM	<b>Keynote Address</b> (Montezuma Hall) <b>Closing Remarks</b> (Montezuma Hall)

### SAVE THE DATE

for next year's SDSU Leadership Summit  
Saturday, February 20, 2021

## Special Thanks

11TH ANNUAL LEADERSHIP SUMMIT

### THANK YOU TO OUR CORPORATE SPONSORS

**Northrop Grumman** is a leading global security company providing innovative systems, products and solutions to government and commercial customers worldwide—offering an extraordinary portfolio of capabilities and technologies for applications from under the sea to outer space and into cyberspace. With more than 85,000 employees in all 50 states and in more than 25 countries, the company strives to attract and retain the best employees by providing an inclusive work environment wherein employees are receptive to diverse ideas, perspectives and talents to help solve our toughest customer challenges.

**Pepsi** is an innovative company with a vision that includes leaving a positive imprint on society and the environment. Pepsi has been an essential supporter of student engagement programs offered at San Diego State University. Its sponsorship helps increase student involvement on campus, ultimately allowing students to participate in meaningful and impactful programs. Pepsi's firm commitment to student success and to student engagement on campus is important to recognize as they have been a vital component of transformational student experiences, which ultimately lead to increased satisfaction and success.

**Adobe** believes in creativity for all – and the next generation is leading the way. With more than 22,000 employees worldwide, the company wants to create, share, connect and make a difference. Adobe offers the best tools for photography, design, video, animation, and more. Only Adobe gives everyone – from emerging artists to global brands – everything they need to design and deliver exceptional digital experiences.

## Session Information

11TH ANNUAL LEADERSHIP SUMMIT

### SESSION 1

9:30-10:20AM

#### HEART-LED LEADERSHIP: THE MISSING PIECE

*Templo Mayor (2nd floor)*

» *Christopher Thomas, Division of Diversity and Innovation, SDSU alumnus*

The values and principles that guide our lives are far more important than our title or the degrees we display on our walls. To be a transformational leader, we must utilize the qualities of humility, vulnerability, transparency, empathy and love. Join me as we unpack these qualities, talk about the journey from head to the heart and incorporate them into our careers and lives.

#### MORE THAN ONE PIECE: GROWING YOUR SPACE IN THE LEADERSHIP PUZZLE

*Council Chambers (3rd floor)*

» *Evan Centala, Residence Life, University of California San Diego*

» *Caitlin Frank, Student Conduct, University of California San Diego*

Navigating the workforce hierarchy in your post-graduate life can be intimidating. How do you effectively leverage your own leadership skills and make the most of these opportunities? Learn how two new professionals have quickly advanced in their field and gain tips on how to grow in your career.

#### "DO I BELONG HERE?" UNDERSTANDING AND WORKING THROUGH THE IMPOSTOR PHENOMENON

*Park Boulevard (1st floor)*

» *Todd Kennedy, Military and Veterans Programs, SDSU*

The Impostor Phenomenon arises when you question your ability despite your capabilities and successes. This session will explore how transition can lead to impostorism. Come discuss ways to overcome the impostor phenomenon through an understanding of the "self" and the value of "capital."

#### SOCIAL MEDIA & LEADERSHIP: DEVELOPING STUDENT LEADERS TO CREATE AN AUTHENTIC DIGITAL IDENTITY

*Pride Suite (1st floor)*

» *Christopher Perez, Student Life, Compton College*

Digital identity has become increasingly important when being considered for educational and professional opportunities. Curating an intentional digital identity demonstrates both tech-savviness and commitment to engage in critical dialogues and issues. Learn how to cultivate a digital identity through social media to become an authentic student leader.

## Session Information

11TH ANNUAL LEADERSHIP SUMMIT

### SESSION 1 CONTINUED

9:30-10:20AM

#### LEADERSHIP THROUGH PURPOSE & SERVICE

*Legacy Suite (3rd floor)*

» *Caliph Assagai, Owner, Caliph Assagai Motivational Speaking*

Join me as I guide you on your path to leadership by understanding the “why” behind stepping up to be a leader. You will identify your life's purpose, identify the group you are most interested in and committed to serving and build a deep understanding of the reasons behind your desire to serve.

#### LEADERSHIP VIRTUES IS A MUST

*Visionary Suite (3rd floor)*

» *Dr. Janet Sawyer, CEO and Founder, JJ Sawyer Consulting LLC*

Leadership is not only about learning and applying the right skills, it is also about developing leadership virtues. In this session, you will learn the four leadership virtues that outstanding leaders demonstrate as they handle conflicts and reasoning skills to help make the right decisions at the right time.

#### FINANCIAL RESPONSIBILITY: TOO OFTEN THE MISSING PIECE

*Aztlan (2nd floor)*

» *Dominic Bilotti, Institutional Financial Consultant, SDSU alumnus*

At some point, every leader must adhere to the principles of financial responsibility. If finances are managed incorrectly, it can affect members' attitudes, organizational effectiveness and sever trust. This session will illuminate potential pitfalls that follow mismanagement and provide tools to navigate them correctly for you and your organization.

#### IDENTIFYING AND VALIDATING PERSONAL VALUES

*Metztli (2nd floor)*

» *Dr. Kenneth Lamb, Director, Student Innovation Idea Lab, Cal Poly Pomona*

Self-awareness is one of the domains of emotional intelligence (EI), and higher EI is linked with effective leadership. In addition to knowing our personality, traits and behaviors, our personal values play a major role in communicating the “who” and “why” behind our decisions. In this session, we focus on different approaches to identifying our personal values and the iterative approach to validating them as our personal values.

## Session Information

11TH ANNUAL LEADERSHIP SUMMIT

### SESSION 1 CONTINUED

9:30-10:20AM

#### FIRST-GENERATION STUDENTS: TRUE STRENGTH COMES FROM WITHIN

*Student Life & Leadership, Commuter Resource Center (2nd floor)*

» *Abdel Amador II, Residential Education Office, SDSU*

» *Rachel Rivera, Student Success Coach, University of California San Diego*

First-generation college students bring a unique set of strengths, capital and leadership qualities to their campus. In this session, we will explore the ways in which your personal journey ties to the leadership qualities that help you succeed and redefine what it means to be a leader.

#### FOLLOWERSHIP: THE MOST IMPORTANT PIECE OF THE LEADERSHIP PUZZLE

*Student Life & Leadership, Jeffrey W. Glazer Center for Leadership & Service (2nd floor)*

» *Doug Case, Retired Student Affairs staff member, SDSU*

Most people, whatever their title, spend more time working as a follower than as a leader. Learn how to develop the critical “followership” skills needed to become a more effective team member. You can be a dynamic follower by supporting and challenging the leadership in working toward your organization's mission and maintaining your organization's values.

#### INCLUSIVE LEADERSHIP

*Student Life & Leadership, Seminar Room (2nd floor)*

» *Jessi Moore, Student Life & Leadership, SDSU*

» *Omar Baza, Student Life & Leadership, SDSU*

"Diversity is being invited to the party. Inclusion is being asked to dance." – Vernā Myers. Come learn how you can be an inclusive leader at any level. We will discuss the difference between being politically correct and inclusive, including environmental inclusion, systemic inclusion, inclusive language and much more!

# Session Information

11TH ANNUAL LEADERSHIP SUMMIT

## SESSION 2

10:30-11:20AM

### SERVANT LEADERSHIP: MORE THAN SERVING OTHERS

*Theatre (2nd floor)*

- » *Dr. Randy Timm, Assistant Vice President for Student Affairs & Dean of Students, SDSU*

This session will address the key foundations in the servant leadership model. While many people understand servant leaders are servants first, you may not know there are key concepts that also include ensuring other people's needs are being met. Serving others requires creative thinking and vision. Join me as I provide an overview of the six key concepts in being a servant leader.

### ASSEMBLING A PUZZLE WITH MISSING PIECES: INCLUSIVE DIVERSITY AS ESSENTIAL TO THE EFFECTIVE PRACTICE OF LEADERSHIP

*Council Chambers (3rd floor)*

- » *Dr. Lisa Gates, College of Education, SDSU*
- » *Aisha Sharif, graduate student & Youth Navigator, SDSU*

Leadership often involves assembling puzzles with missing pieces. As leaders, we are asked to navigate the uncertainties of organizational life. Having meaningful interactions with diverse groups offers opportunities for making discoveries that disrupt stereotypes and inaccurate assumptions. This session will actively engage you in several exercises to reveal how multi-faceted our experiences are to our leadership experience.

### BECOMING A COACHABLE LEADER: A PROVEN STRATEGY FOR BECOMING ANYTHING YOU WANT TO BE

*Park Boulevard (1st floor)*

- » *Maria Keckler, President's Office, SDSU*

Becoming a coachable leader is a journey that takes us through surprising personal, relational, emotional and professional turns. It will challenge you to confront your assumptions, your fears and the limitations you have come to embrace. Becoming a coachable leader is arguably the most valuable practice you can adopt, starting today.

### SELF-CARE: THE MISSING PIECE

*Pride Suite (1st floor)*

- » *Tiyana Dorsey, SDSU alumna*

Leaders often feel they have to be perfect. This pressure can make anyone spiral out of control. Join me as I teach you realistic ways to create a self-care routine

# Session Information

11TH ANNUAL LEADERSHIP SUMMIT

## SESSION 2 CONTINUED

10:30-11:20AM

that will allow you to maintain a healthy mental state. You will engage in different tangible activities such as puzzles, breathing exercises and writing affirmations that you can incorporate into your everyday life.

### TO MAKE IMPACT, YOU HAVE TO BE HEARD

*Visionary Suite (3rd floor)*

- » *Pam Baker, Founder & CEO, Journeous*

As George Bernard Shaw said, "The biggest problem with communication is the illusion that it's taken place." In this session, we will share actionable steps to apply the science of communication so you can decode human behavior, prevent conflict and deliver your message as intended. There is no skill more valuable to create lasting impact!

### UNCOVERING YOUR VALUES

*Aztlan (2nd floor)*

- » *Lori Loftin, Graduate Assistant, SDSU*
- » *Jenna Bautista, student leader, SDSU*

What is the first step to values based leadership? Uncovering your personal values! This session will guide you through the process of getting to know your values and setting goals for how to integrate your values into your own personal leadership.

### LIFE AFTER GRADUATION: FINDING YOUR PLACE

*Metztli (2nd floor)*

- » *Annika Daphne Bilog, Registered Nurse, SDSU Alumna*

Do you feel afraid of entering the "real world" after graduation? In this interactive session, we will discuss how the leadership characteristics we develop as student leaders will help us find our place during a significant transition into life after college.

### THRIVING THROUGH CHALLENGES AS A FIRST GENERATION COLLEGE STUDENT

*Student Life & Leadership, Commuter Resource Center (2nd floor)*

- » *Angel Rocha, Compact for Success, SDSU*
- » *Faizah Hussein, College Outreach, SDSU*

What struggles do first-generation college students face and how do they overcome them? Join us as we discuss strategies on how to persist through these challenges and learn how you can support your first-generation peers.

# Session Information

11TH ANNUAL LEADERSHIP SUMMIT

## SESSION 2 CONTINUED

10:30-11:20AM

### AUTHENTICITY & THE NEED FOR UNCOMFORTABLE CONVERSATIONS

*Student Life & Leadership, Jeffrey W. Glazer Center for Leadership & Service (2nd floor)*

» Rogelio Becerra Songolo, *Student Life & Leadership, SDSU*

This session will focus on the role that authenticity plays in developing leaders within an organization. Organizational sustainability is founded on the trusting belief that leaders will guide others towards a shared goal. Join me as we figure out our leadership styles and reflect on our leadership experiences. We know that communication is important, but how do we know when it is crucial to practice it?

### DATA-DRIVEN LEADERSHIP

*Student Life & Leadership, Seminar Room (2nd floor)*

» Daniel Matlock, *data analyst, SDSU alumnus*

How do you measure that you are improving as a leader? How can you leverage data in a leadership role? Learn how data can drastically impact and enhance your ability to reach your full potential as a leader, both now and in the future.

## LUNCH

11:20-12:00PM

*Engineering/STEM students* should go directly to Templo Mayor on the second floor for lunch with Northrop Grumman representatives.

*Non-Engineering/STEM students* should pick up a box lunch in the Conrad Prebys Aztec Student Union Courtyard. Once you get your lunch, you have two options:

- » Enjoy your lunch in the courtyard or around campus.
- » Join SDSU's Assistant Vice President for Student Affairs & Dean of Students Dr. Randy Timm for a casual leadership conversation in Park Boulevard on the first floor. (capacity: 80)

# Session Information

11TH ANNUAL LEADERSHIP SUMMIT

## SESSION 3

12:00-12:50PM

### MASTER YOUR CRAFT: OUR JOURNEY FROM STUDENT LEADER TO AMAZON BEST-SELLER

*Theatre (2nd floor)*

- » Leo Carrillo III, *CEO, Hair Craft Co., SDSU alumnus*
- » Alex Padua, *CFO, Hair Craft Co., SDSU alumnus*
- » Zak Semitka, *Director of Marketing, Hair Craft Co., SDSU alumnus*
- » J. Cole, *Hair Craft Co., SDSU alumnus*

Are you wondering how the leadership skills you develop as a student will eventually translate into the business world? Join us as we share our journey from student government leaders to starting our own business: Hair Craft Co.

### NETWORKING WITH NORTHROP GRUMMAN REPRESENTATIVES

*Templo Mayor (2nd floor)*

Are you an engineering/STEM student? Network with top Northrop Grumman representatives to learn about career opportunities and why the company places an emphasis on leadership. At Northrop Grumman, innovation isn't just an idea – it's a way of life.

### THE PIECES OF AN INTROVERTED LEADER

*Council Chambers (3rd floor)*

- » Diana Joy Go, *Graduate Assistant, SDSU*
- » Jezye Deo Diez, *Resource Specialist, Grossmont Community College*

Do all leaders need to be loud and charismatic? Where do you fit in as a quiet leader? Join us as we spotlight the strengths of introverted leaders. By reframing the term "introversion" as a strength, we will discuss the benefits and pieces of an introverted leader.

### LEADING ACROSS GENERATIONS

*Pride Suite (1st floor)*

- » Lisa Holmes, *Chief Business Strategist, Strategic Performance of Los Angeles*

The workplace is becoming more generationally diverse than ever before. As a leader, you could be managing a team that consists of many generations. Learn how to navigate the environment by recognizing the strengths and unique traits each generation brings to the leadership world.



# Session Information

11TH ANNUAL LEADERSHIP SUMMIT

## SESSION 3 CONTINUED

12:00-12:50PM

### PUTTING THE PUZZLE PIECES TOGETHER: NO LEADERSHIP ROLE TOO BIG OR TOO SMALL

*Legacy Suite (3rd floor)*

- » Ahliyah Chambers, Black Resource Center, SDSU
- » Brenna Leon, graduate student, SDSU

As a graduating senior or incoming student – no matter where you stand in your leadership role – your contributions make a difference and should be valued by yourself and others around you. This session will demonstrate how you should take ownership of your leadership role. The puzzle cannot be completed without every piece, including you!

### DIVERSI-TEA AND INCLUSIVI-TEA

*Visionary Suite (3rd floor)*

- » Sabrina Willison, Student Organizations, Pepperdine University
- » Leylani Orozco, Graduate Assistant, Whittier College

Join us for tea time as we discuss how to effectively and intentionally program for campuses that serve a diverse student body. This session will give you resources on how we, as new professionals, seek to implement and improve diversity within our campus programming. We will discuss our pitfalls of diversity within areas of orientation, campus life and student programming boards.

### THE MISSING LINK: ADDRESSING SPIRITUALITY AS A PIECE OF OUR LEADERSHIP DEVELOPMENT

*Aztlan (2nd floor)*

- » Dr. Matt Cabrera, Student Life and Development, California State University, Long Beach

Holistically, developing ourselves and others into strong leaders is a complex process. The idea of spirituality or our "inner self" can be easily ignored. This session will discuss how to explore spirituality in the context of leadership and development – finding purpose, making meaning, connections with others, service, and pluralistic worldviews.

# Session Information

11TH ANNUAL LEADERSHIP SUMMIT

## SESSION 3 CONTINUED

12:00-12:50PM

### STUDYING ABROAD IS THE MISSING PIECE IN YOUR LEADERSHIP PUZZLE

*Metztli (2nd floor)*

- » Monique Lynch, Graduate Assistant, California State University, Fullerton

I know what you're thinking: how does study abroad relate to leadership? There are many ways that studying abroad can foster leadership skills. This session will address the ways you can gain leadership skills by studying abroad and discuss how these newfound leadership skills are a huge return on investment.

### FITTING SELF-CARE INTO THE LEADERSHIP PUZZLE

*Student Life & Leadership, Commuter Resource Center (2nd floor)*

- » Kevin Araujo-Lipine, Student Life & Leadership, SDSU

Leaders often neglect to prioritize self-care, as they focus their attention on the care for others. This session will help you to reflect on how you incorporate self-care into the puzzle we call leadership. You will leave with an action plan to see self-care as an essential piece to your leadership puzzle.

### CONNECTING THE PUZZLE PIECES TOGETHER: A LEADER'S GUIDE TO OVERCOMING THE IMPOSTOR SYNDROME

*Student Life & Leadership, Jeffrey W. Glazer Center for Leadership & Service (2nd floor)*

- » Dr. Lisa Gates, College of Education, SDSU
- » Chasejamison Akilah Manar-Spears, student leader, SDSU

Impostorism is a highly damaging and widely experienced phenomenon that undermines the self-confidence of leaders. It is a cycle that leads high achievers to question their abilities, preventing them from experiencing a sense of mastery. We will share vital tools required to break this cycle through engaging learning and activities.

### PEACE BY PIECE: RESTORATIVE APPROACHES TO BUILDING COMMUNITY & REPAIRING HARM

*Student Life & Leadership, Seminar Room (2nd floor)*

- » Tierney Harrison, Student Life & Leadership, SDSU

Join me as we explore restorative practices and its applications for community building, collaborative and inclusive problem-solving, repairing harm and restoring relationships. Learn about this philosophical approach to leadership and how it emphasizes our interconnectedness and values the piece we each play in creating peace, harmony, and justice.



# Session Information

11TH ANNUAL LEADERSHIP SUMMIT

## SESSION 4

1:00-1:50PM

### ASSOCIATED STUDENTS @ SDSU: YOU ARE AN IMPORTANT PIECE OF THE PUZZLE

*Theatre (2nd floor)*

» *SDSU Associated Students Leaders*

A panel of SDSU Associated Students (AS) leaders will discuss their leadership highlights and challenges. They will give an overview of what AS provides for students and will share many leadership opportunities available at SDSU. This is your chance to ask questions to the AS leaders!

### A LEADER'S VOICE: PUBLIC SPEAKING WITH POWER

*Templo Mayor (2nd floor)*

» *Angel Salazar, Financial Aid Specialist, Southwestern Community College*

» *David Naranjo, Toastmasters International, Viewsonic Corporation*

» *Tara Gilboy, Adjunct Professor, San Diego Community College*

Are you afraid of public speaking? This session will introduce you to important concepts of public speaking and will give you tools you can use on your journey towards becoming a more compelling and confident communicator. Please note that this is an experiential presentation, which will include interactive partner exercises for speaking skills.

### SEEING YOURSELF IN THE BIGGER PICTURE

*Council Chambers (3rd floor)*

» *Tommy Peterson, Residential Education Office, SDSU*

In a world of increased competition for leadership roles and jobs, many people feel the need to assimilate. Today, we will discuss the concept of authentic leadership and analyze your individual strengths to see how you can leverage them in current and future roles.

### LET'S GET IN "FORMATION": WOMXN LEADERSHIP & MUSIC

*Park Boulevard (1st floor)*

» *Brittany Lynner, Residential Education Office, SDSU*

» *Keely Kerr, student leader, SDSU*

Beyoncé. Dolly Parton. Janelle Monáe. Lizzo. Taylor Swift. These womxn represent intersectionality, inclusivity and empowerment. Come discuss how their music inspires others and helps to encourage positive change in our communities. Please note that some music will contain explicit lyrics.

# Session Information

11TH ANNUAL LEADERSHIP SUMMIT

## SESSION 4 CONTINUED

1:00-1:50PM

### THE FUTURE OF BUSINESS: THE INTERSECTION OF INFLUENCE, AUTHENTICITY AND KINDNESS

*Legacy Suite (3rd floor)*

» *Mark Shapiro, Impact Strategist, KindFluence*

Whether you are marketing a product or looking to increase engagement, your success will inevitably come down to your ability to influence. But in an age in which it's growing more challenging to garner attention, build trust and inspire action, your success will depend less on what you influence and more on how you influence. Join me to learn strategies to help you become a better leader.

### MENTORING: HOW TO BUILD YOUR PERSONAL BOARD OF DIRECTORS TO ACHIEVE YOUR GOALS

*Visionary Suite (3rd floor)*

» *Thomas Samph, CEO, MyNet*

Less than 25% of students report having a mentor in college ... yet students are far more likely to succeed when they have a mentor on their side. In this session, I will guide you through a goal-setting process and a social network mapping exercise to help you build your own personal board of directors.

### WHICH PENGUIN ARE YOU? PLANNING, DELIVERING AND EMBEDDING CHANGE USING KOTTER'S PROCESS

*Aztlan (2nd floor)*

» *Dr. Matthew Verbyla, College of Engineering, SDSU*

» *Tina Vo, student leader, SDSU*

Come learn how to create change using John Kotter's eight-step process. First, you will learn the theory through the fable "Our Iceberg Is Melting," which describes a penguin colony that has to abandon the only iceberg they have ever known. Then, you will apply the process to specific, relatable scenarios.

### WRECK-IT LEADERSHIP: CREATING YOUR OWN PATH IN LEADERSHIP DISCOVERY

*Metztli (2nd floor)*

» *Matthew H. Garcia, Student Life & Leadership, SDSU*

Influenced by Disney movies "Wreck-It Ralph" and "Ralph Breaks the Internet," this interactive session will challenge you to reflect on where you fit in the leadership puzzle. Join me as we identify your strengths and any challenges or barriers placed before you in your journey of self-discovery and the achievement your goals.

## Session Information

## 11TH ANNUAL LEADERSHIP SUMMIT

**SESSION 4 CONTINUED**

**1:00-1:50PM**

## INCLUDING OTHERS WITH MINDFUL LANGUAGE

*Student Life & Leadership, Commuter Resource Center (2nd floor)*

- » *Kaleigh Lacouture, Graduate Assistant, SDSU*
- » *Helen Ma, Graduate Assistant, SDSU*
- » *Michelle Halverson, Graduate Assistant, SDSU*

Whether you are the CEO of a worldwide organization or a student leader, inclusivity is key. As leaders, we must practice inclusivity through our actions and words and be socially aware of the impact – both positive and negative – we can have on others. Join us as we discuss strategies to be inclusive leaders.

## BUILDING CHAMPIONS AND CHASING VICTORY

*Student Life & Leadership, Jeffrey W. Glazer Center for Leadership & Service  
(2nd floor)*

- » Erik Weber, attorney, Team Skybirds

Doctors said he would not be mentally older than 18 months due to his autism and that he should be placed in an institution. That institution turned out to be law school. Come hear the amazing story of Erik Weber, a San Diegan who truly believes that adversity makes a person stronger. This session dives into one of the greatest hindrances of growth and progress: to become a more effective leader, the desire to break boundaries must outweigh the fear of failure.

## LEADERSHIP AND THE HYBRID BRAIN: SUN ZI'S "ART OF WAR"

*Student Life & Leadership, Seminar Room (2nd floor)*

- » Dr. Sandra Wawrytko, Director, Center for Asian & Pacific Studies, SDSU

Sun Zi is well-known for his book "Bing Fa, The Art of War." The stimulus-driven default mode in our bilateral brain allows for flexible thinking responsive to changing environments. Described as "the Master," task-driven attention served as its "emissary" but aspired to overthrow the Master, prioritizing narrow internal mentation.

## Notes

11TH ANNUAL LEADERSHIP SUMMIT

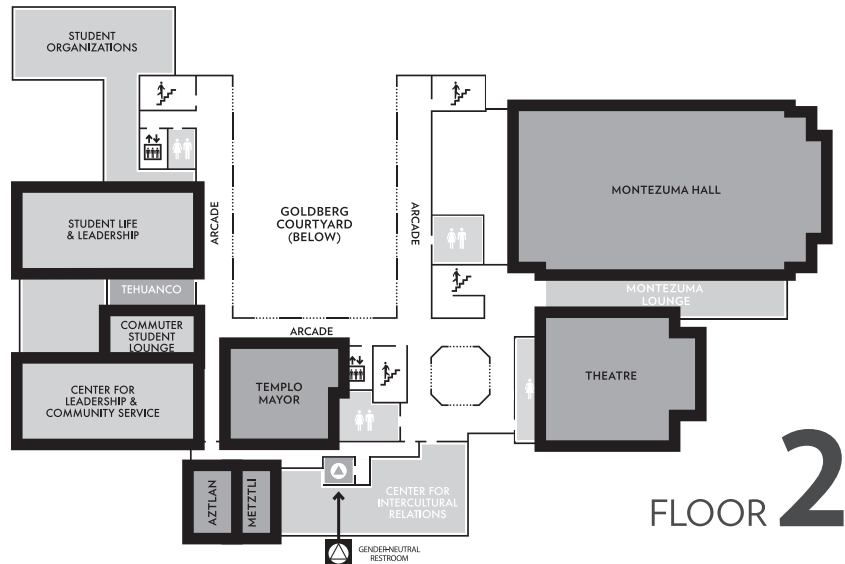
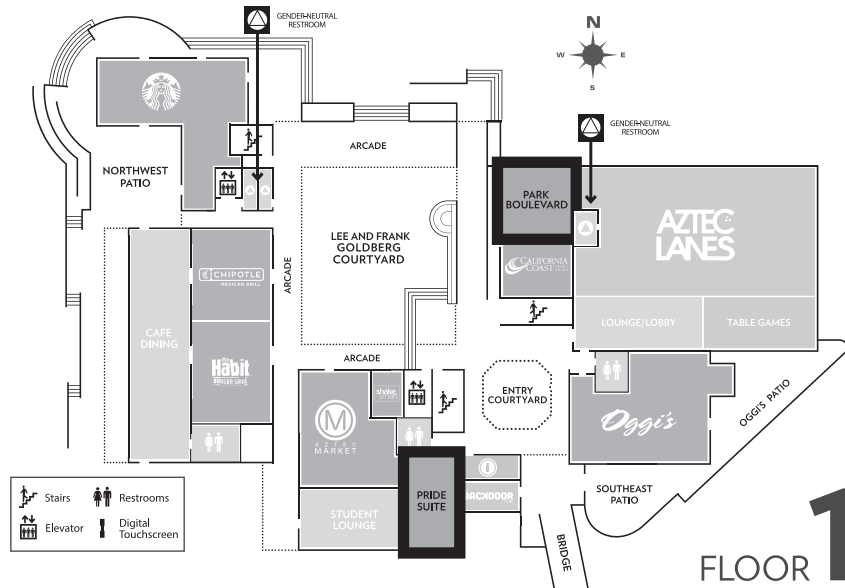
This image shows a blank sheet of white paper with horizontal ruling lines. The lines are evenly spaced and extend across the width of the page. There are no margins, text, or other markings on the paper.

The SDSU Leadership Summit is a part of the Division of Student Affairs' mission to develop leaders who possess a comprehensive understanding of the challenges we face in the 21st century. Participants who attend the SDSU Leadership Summit will have the opportunity to acquire the following competencies:

- » Heightened knowledge of self
- » Discovering personal motivations to lead
- » Increased capacity for change/ambiguity and self-reflection
- » Clarified sense of leadership aspirations
- » Awareness of adversity as force for positive change

# Conference Map

11TH ANNUAL LEADERSHIP SUMMIT



# Conference Map

11TH ANNUAL LEADERSHIP SUMMIT





# Thank You *for attending*

## *San Diego State University's 2020 Leadership Summit*

---



Special acknowledgements to those who made this conference possible!

### **Co-Directors:**

Dr. Randy Timm, Assistant Vice President for Student Affairs & Dean of Students  
Dr. Robyn L. Adams, Student Life & Leadership

### **Coordinator:**

Chelsea Winer, Student Life & Leadership

### **Regional Advisory Board:**

California State Polytechnic University, Pomona  
Glendale Community College  
San Diego City College  
San Diego State University  
San Diego State University – Imperial Valley Campus  
University of California, San Diego  
University of San Diego

### **SDSU Leadership Advisory Board**

Christy Samarkos  
Dr. Robyn L. Adams  
Dr. Barry Y. Chung  
Ben Clay  
Alan Dulgeroff  
Bill Earley  
Dr. Lisa Gates  
Dr. Jeffrey Glazer  
Perette Godwin

Matt Golojuch  
Catherine Howard  
Donna Jones  
Josephina Ly  
Channelle McNutt  
Caryl Montero-Adams  
Dan Montoya  
Ben Moraga  
Dr. Eugene Olevsky

Christian Onwuka  
Howard Singer  
Greg Smith  
Dr. James Tarbox  
Jimmy Thai  
Lily Thai  
Dr. Randy Timm  
Chelsea Winer

### **Campus Partners:**

Division of Student Affairs  
Student Affairs Communication Services  
Associated Students

### **Official Sponsors:**



**SAN DIEGO STATE  
UNIVERSITY**

**Division of Student Affairs**

Presented by  
Student Life & Leadership  
San Diego State University  
5500 Campanile Drive  
San Diego, CA 92182

[sl.sdsu.edu](http://sl.sdsu.edu)